

TWAIN CENTER

4401 Twain Ave., #11



Approx. 720 sf.
Warehouse w/ Office



Rate: 1.18/foot or
\$850/month industrial gross

Term: 1-3 years

Available: Now

Description: One large
office, warehouse, grade
level 10x10 truck door, a/c in
offices. Common restroom
in complex, no running
water or restroom in space.

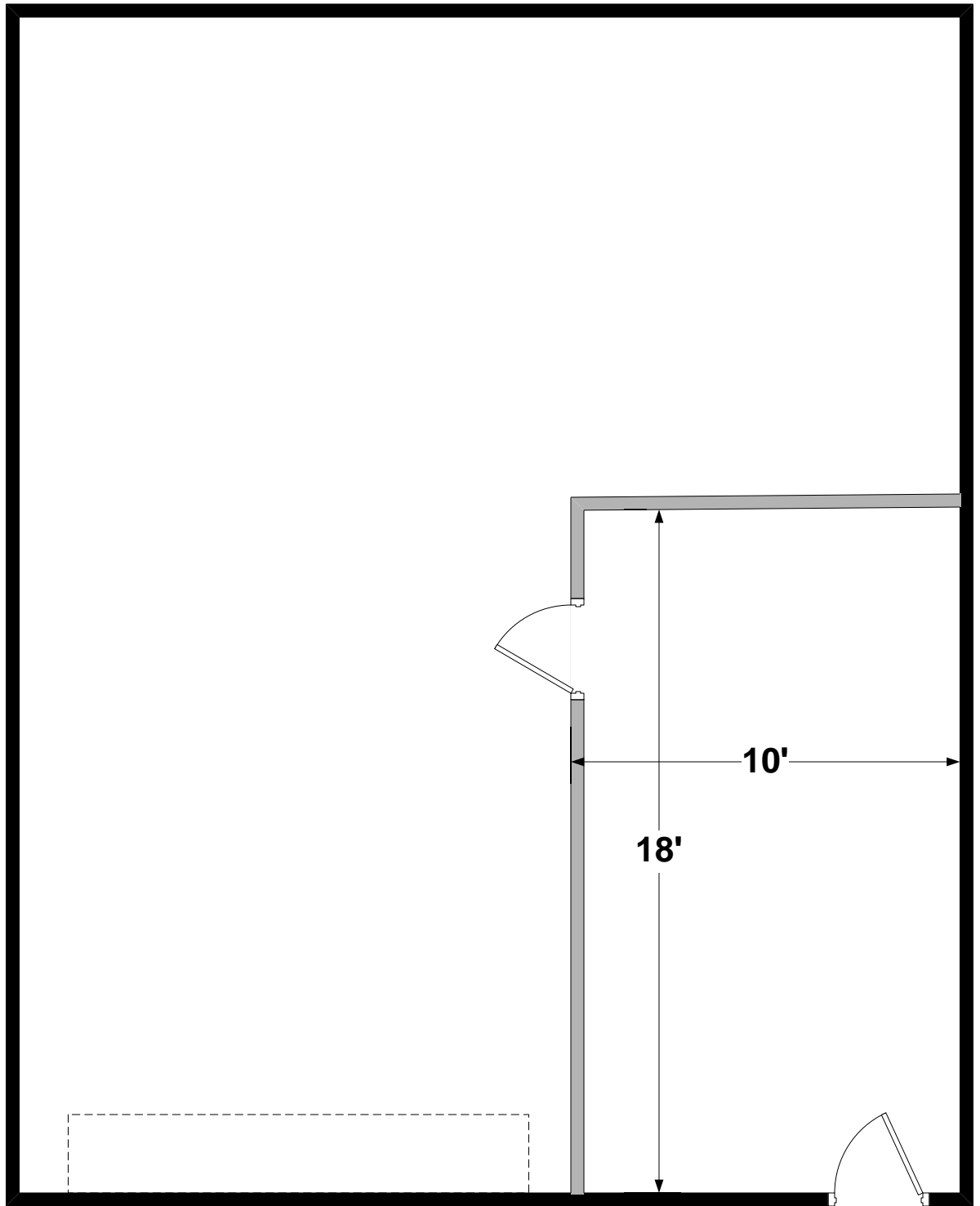
For more information call:

858.272.7070

Joan Barnes

24'

30'



Truck Door

Front Door



4401 Twain Ave. #11 - 720 SF

Joan Barnes – (858) 272-7070